



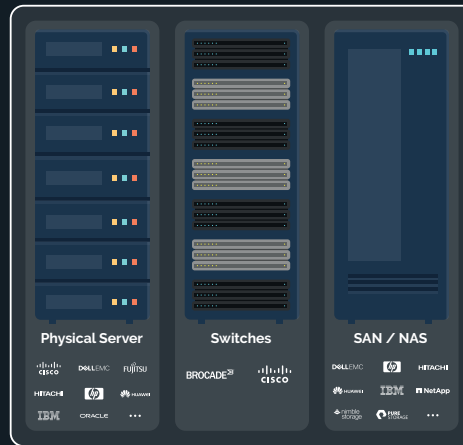
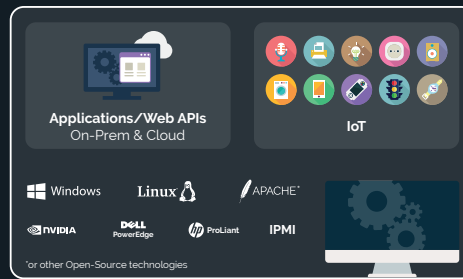
MetricsHub provides **real-time performance and health monitoring** for on-premises and hybrid IT infrastructure.

Designed for IT administrators, it offers actionable insights to **maximize uptime, optimize resources, reduce costs, and lower carbon footprint.**



Suitable for:

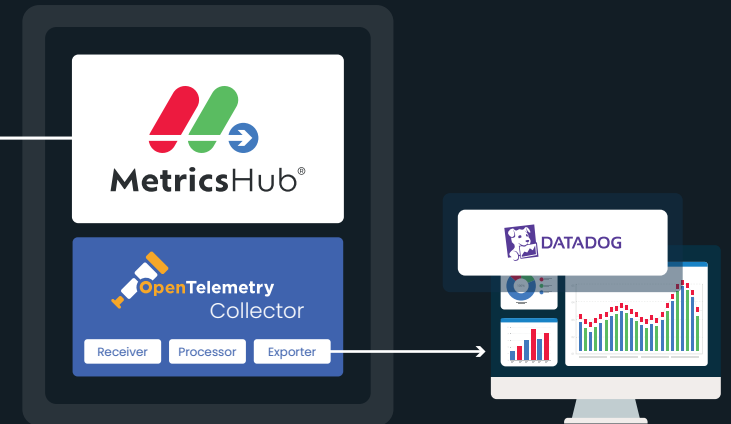
- Data centers
- Enterprise IT environments
- Hybrid cloud infrastructure



Key Benefits

- Extensive monitoring coverage
- Unified data collection
- Reduced downtime
- No vendor lock-in
- IT energy saving

How It Works



Core Features

Real-Time Infrastructure Monitoring

Track critical server metrics like CPU, memory, disk usage, network, storage capacity and performance in real-time.

Predictive Alerts and Custom Thresholds

Set custom thresholds and receive automatic alerts to prevent system failures and downtime.

Cross-Vendor Compatibility

MetricsHub supports multi-vendor and hybrid environments, offering seamless monitoring for diverse infrastructures.

Comprehensive Dashboards

Get access to customizable dashboards that provide deep insights into server and storage performance, resource usage, and emissions.

Historical Data & Trend Analysis

Analyze performance data over time to optimize resource allocation and improve operational efficiency.

Supported Platforms

100+ platforms, from the oldest to the latest

BROCADE



DELL EMC

FATON

FUJITSU

HITACHI



JUNIPER NETWORKS

Lenovo

nimblestorage

NVIDIA

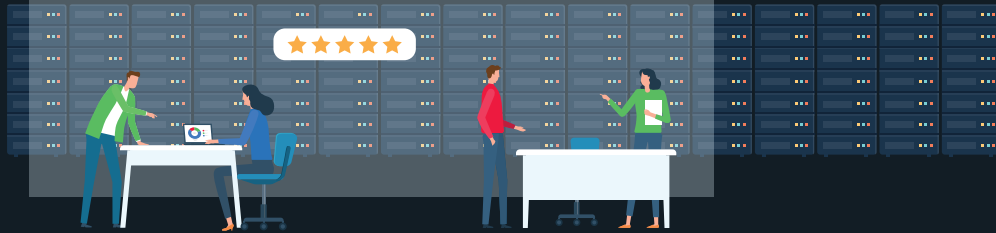
NEC

NetApp

ORACLE

PURE STORAGE

vmware



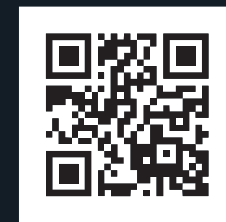
Features

- Remote monitoring ✓
- Sustainability metrics ✓
- Linux and Windows systems monitoring ✓
- Hardware and storage monitoring ✓
- 200+ dedicated connectors ✓
- Seamless installation with executable packages ✓
- Seamless integration through embedded, managed, and secured OpenTelemetry Collector ✓
- Premium support services for MetricsHub ✓
- Premium support services for Prometheus ✓



MetricsHub®

Stay Ahead with Real-Time Insights on IT Health



metricshub.com